

Comparison of Incarceration Supervision Types

The current generation of incarceration systems utilize linear/remote surveillance, podular/remote surveillance and podular/direct supervision of inmates.

The common problem in these prison designs is that they can only provide varying degrees of intermittent supervision of inmates. Any Intermittent Supervision increases risk both for inmates and staff.

The next evolution of incarceration design, offering an improvement over existing designs and the solution to Intermittent Supervision inadequacies, is: **Total Supervision™**.

How does Total Supervision differ from Intermittent Supervision?

Intermittent Supervision, by definition, allows for unobserved, unrecorded, and unsupervised interaction between inmates and between staff and inmates.

While Intermittent Supervision is not specifically disallowed by the Prison Rape Elimination Act (PREA), Intermittent Supervision does create opportunities for sexual assault and thus opens the door to significant liability under the PREA. Without 100% Total Supervision™ how can any Incarceration Administration prove zero tolerance?

While wholesale replacement of existing facilities is not suggested nor economically feasible, modest adjacent, Total Supervision™ facilities for at risk, youthful or weaker inmates may be warranted and prudent.

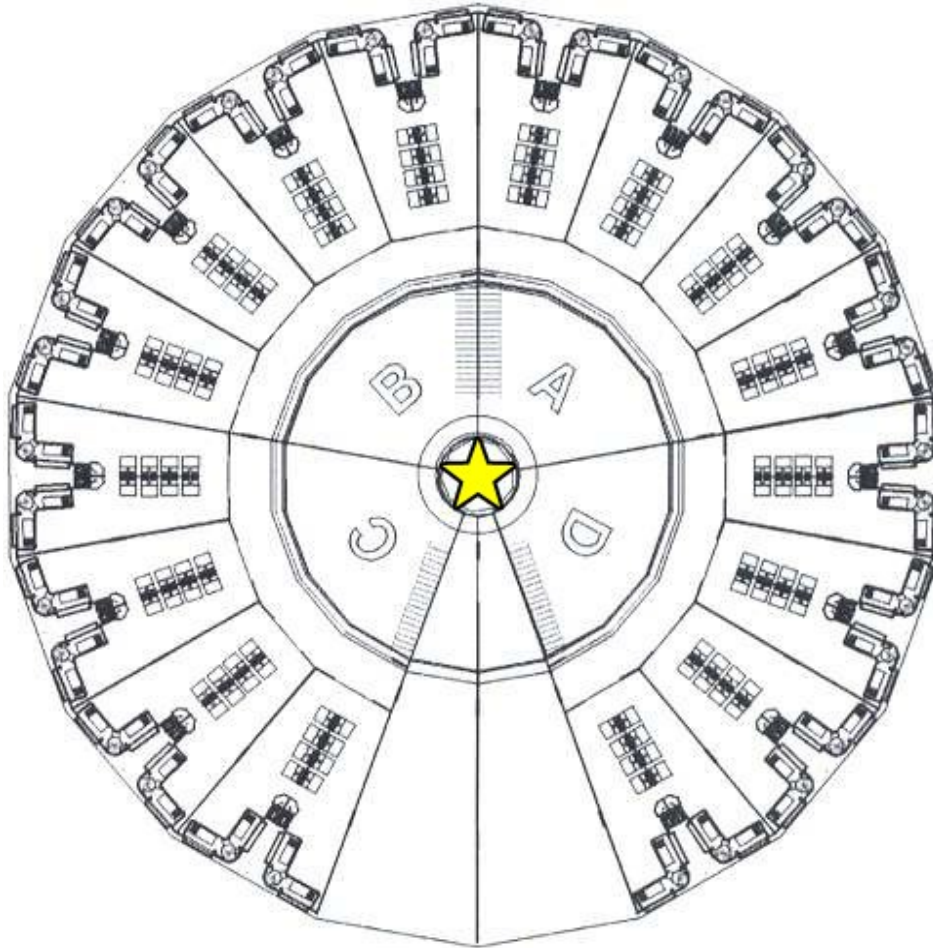
Total Supervision™ means 100% inmate visibility at *all* times. Total Supervision™ means no structural blind spots and no environments of opportunity. Only the patented OmniView™ is capable of providing Total Supervision™.

All inmate activity is visible to staff in the central control room and is recorded via total CCTV to permanent DVD archives. Only the OmniView™ zero structural blind spot design is able to truly meet and prove 24/7/365 the number one purpose of the PREA: *Zero Tolerance*.

Design Name	Supervision Type	Safety
1. Linear / Surveillance	Intermittent Supervision	3
2. Podular / Remote Surveillance	Intermittent Supervision	5
3. Podular/ Direct Supervision	Intermittent Supervision	7
4. OmniView™	Total Supervision™	10

A comparison of incarceration systems safety on a scale of 1-10 with 10 being the most desirable.

How does the OmniView™ make Total Supervision™ possible?

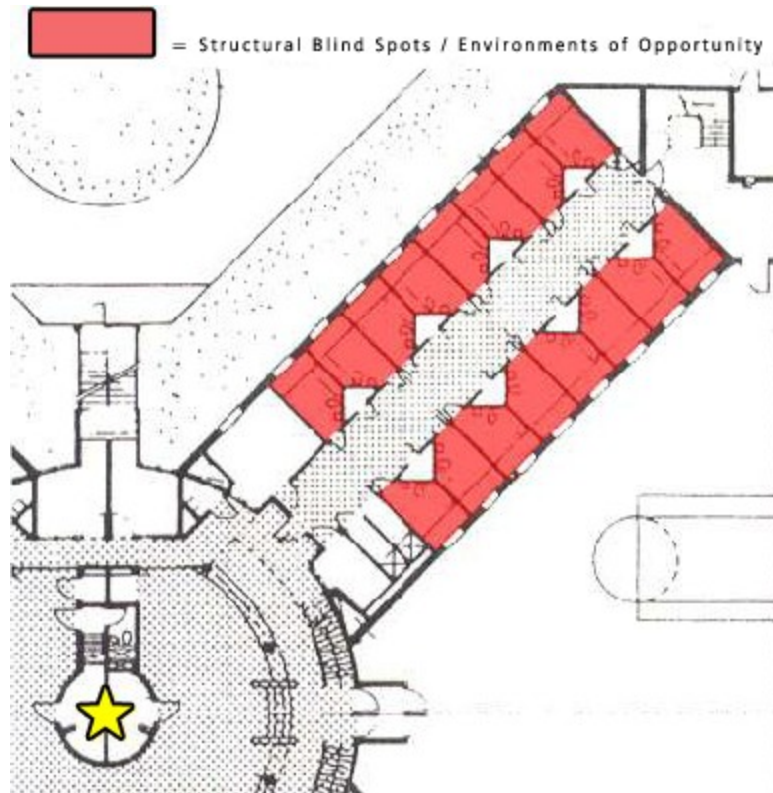


To achieve Total Supervision™ required twenty years of research dedicated to finding a cost effective incontrovertibly safer and healthier design. Our one of a kind incarceration design places a central control room (marked above by the gold star) in the center of a circular incarceration center. This amazing design allows inmates to be separated into 100% observable units, without obstructing vision from the central control room.

For a video demonstration of how the OmniView™ walls literally disappear from the central control room's visual field, or for more information, select the online video at:

RadialOmniView.com

Linear / Surveillance

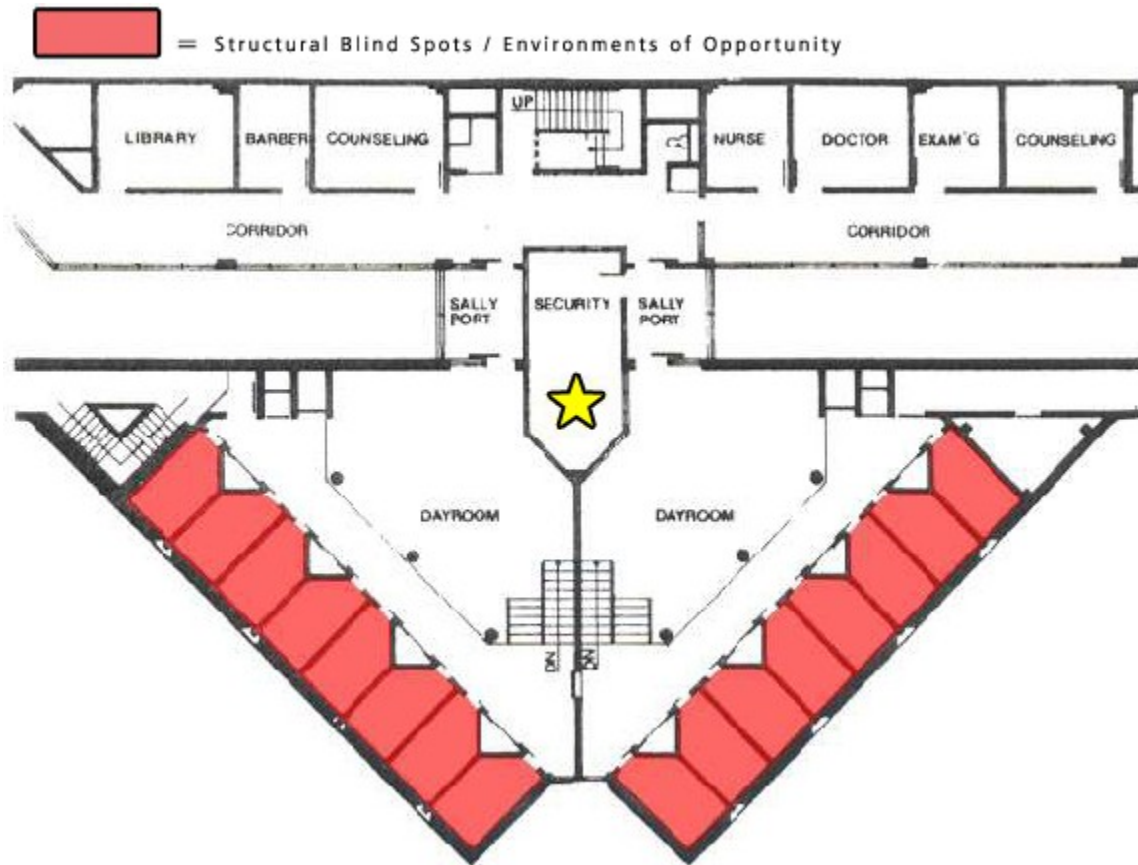


The Linear / Surveillance prison design, depicted above, places staff in a central control area (marked above by the gold star) with cells located down hallways branching out from the main control area.

As shown above, the Linear / Surveillance prison design provides Intermittent Supervision of inmates, with structural blind spots in every single cell.

The above diagram is taken from the *National Directory of Corrections Construction*, with our own graphics added for clarity.

Podular / Remote Surveillance

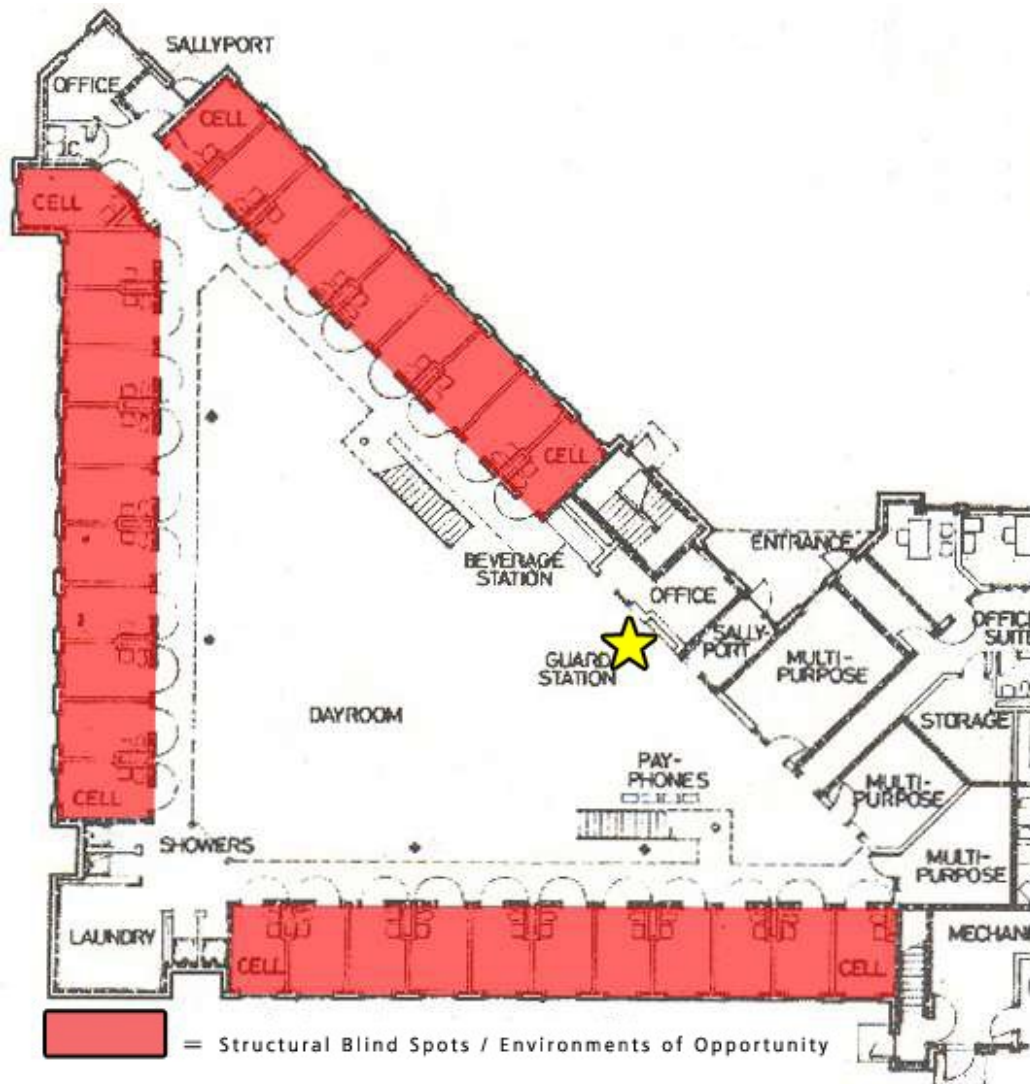


The Podular / Remote Surveillance prison design, depicted above, places staff in an enclosed central control area (marked above by the gold star) with some cells facing the control center.

As shown above, the Podular / Remote Surveillance prison design provides Intermittent Supervision of inmates, with structural blind spots in every single cell.

The above diagram is taken from the *National Directory of Corrections Construction*, with our own graphics added for clarity.

Podular / Direct Supervision



The Podular / Direct Supervision prison design, depicted above, places staff in the day room area (marked above by the gold star) with some cells facing the control center and others adjacent to the control center.

As shown above, the Podular / Direct Supervision prison design provides Intermittent Supervision of inmates, with structural blind spots in every single cell.

The above diagram is taken from the *National Directory of Corrections Construction*, with our own graphics added for clarity.

Comparison of Incarceration Supervision Types: Final Analysis

Linear/Surveillance, Podular/Remote Surveillance and Podular/Direct Supervision designs have structural blind spots in every cell as well as other facility areas. The fact that the PREA was necessary shows that these existing incarceration systems cannot enforce a zero tolerance policy.

In contrast, the OmniView™ is able to offer Total Supervision™: 100% zero structural blind spot supervision of all staff and inmates at all times in all areas.